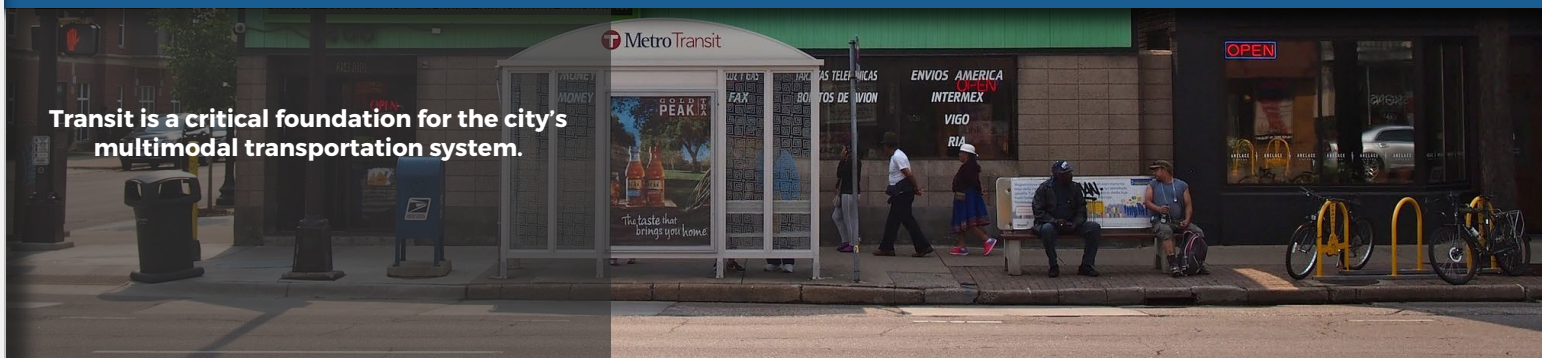


Transit is a critical foundation for the city's multimodal transportation system.



TRANSIT STOPS INTRODUCTION AND GENERAL GUIDANCE

Transit is a critical foundation for the city's multimodal transportation system. Metro Transit typically installs and maintains the transit stops throughout Minneapolis and the region; a few transit stops in Minneapolis are maintained by other transit providers. Public Works collaborates with Metro Transit and other providers on the location and design of transit stops in City right of way as well as on new service and operations of transit on City streets. Public Works installs and maintains bus stop signs.

TRANSIT ROUTES AND TRANSIT PRIORITY PROJECTS

The transit route network includes local bus, express bus, bus rapid transit, and light rail transit routes operated by Metro Transit or other transit providers. Transit Priority Projects identified by the City of Minneapolis in the Transportation Action Plan includes corridors identified for improvements to frequency and reliability on existing routes and identifies where new crosstown services are needed.

Types of transit stops

There are four general types of transit stops:

- Regular-route bus stops served by local and express service with or without a shelter;
- Bus Rapid Transit stations, the vast majority of which have shelters and other customer amenities;
- Light Rail Transit stations. Details for LRT stations are not covered in this guidance.
- Northstar Commuter Rail stations. Details for commuter rail stations are not covered in this guidance.

Related guidance

- [3.6E Bus-only lanes](#)
- [3.6F In-lane bus stops](#)
- [3.5D Bus stops and bikeways](#)